

# PENSTOCKS

Medium pressure penstock Type: KSA-MD 100-800 mm

## Applications

KSA penstocks are very varied and are used in surface, sewage and process water.

## Operation

As well as the low pressure penstock type: KSA-LD (3MwC) and the high pressure penstock type: KSA-HD (10 MwC) also has a penstock in its program that is a well known and popular penstock for years: the KSA-MD (5 MwC), on/off seating from both sides of the plate. On this page we would like to inform you about this KSA-MD.

Penstocks are available in various types, comprising of a plate which moves up and down in runners, to control water flow from either direction. When closed, the penstocks are designed to seal the pipe. The penstocks are manufactured in HDPE (High Density Polyethylene) and Stainless Steel 316. This penstock has a non rising spindle( standard), but also a rising spindle is possible.

Due to the materials used, the operation torques for the penstocks are very low. The penstocks can be operated using handwheels, T-cranks and actuators.

## Benefits

Standard penstocks are available from stock. Penstocks with a culvert in a different shape can be delivered in a short time

Almost maintenance free

Easy to install

Low operation torques

Very reliable

The penstocks are designed to be very easy to install, and are available in various types:

Wall mounted

Pipe mounted

Flange mounted



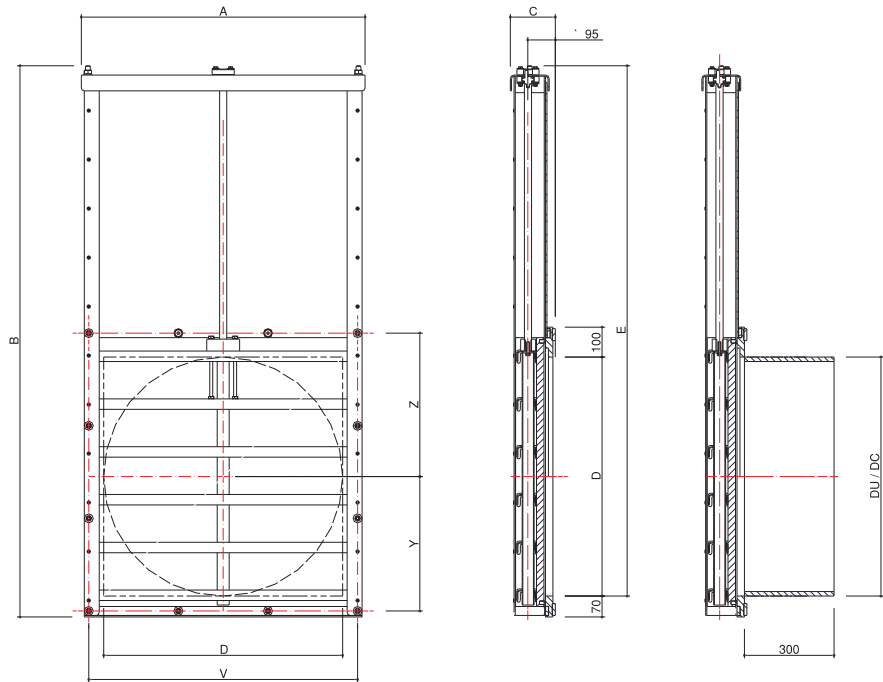
## Specifications



Opening	: Ø 100 mm to Ø 800 mm
Pressure rating	: max. 5 MwC (on/off seating)
Operation method	: manual or through an actuator
Operation point	: connection ("half moon")
Movement mechanism:	: Non-rising spindle
Higher pressures and special measurements delivered on request	

## Materials

Plate	: HDPE with AISI 316L Stiffeners
Spindle	: AISI, 316
Spindle Block	: POM
Bearing	: OLG
Backplate	: HDPE
Sealing	: EPDM
Mounting Material	: AISI, 316
Other materials on request	

## Medium pressure penstock Type: KSA-MD 100-800 mm



NW mm.	O D mm.	P DU mm.	BS DC	A mm.	B mm.	C mm.	E mm.	V mm.	Y mm.	Z		
	<b>110/800</b>		±	<b>D +150</b>	<b>(2XD) +250</b>		<b>(2XD) +180</b>	<b>D +100</b>	<b>(0,5D)+50</b>	<b>(0,5D) +80</b>	<b>D+35)/6</b>	
100	110	110		260	470	130	400	210	105	135	24	10
125	125	125		275	500	130	430	225	112,5	142,5	26	10
150	160	160		310	570	130	500	260	130	160	32	10
200	200	200		350	650	130	580	300	150	180	39	10
250	250	250		400	750	130	680	350	175	205	47	10
300	315	315	290	465	80	130	810	415	207,5	237,5	58	15
400	400	400	390	550	1050	130	980	500	250	280	72	20
500	500	500	490	650	1250	130	1180	600	300	330	89	30
600	600	630	590	750	1450	145	1380	700	350	380	105	45
700	700		690	850	1650	155	1580	800	400	430	122	55
800	800		790	950	1850	170	1780	900	450	480	139	70

### Description for tenders

Medium pressure penstock type KSA-MD100-800 mm

**Materials:** HDPE, AISI 316, EPDM and POM

**Opening:** Ø 100 mm to Ø 800 mm

**Working pressure:** 5 MwC (On/off seating)

Penstock with a non rising spindle. Bearing OLG. Backplate HDPE. Plate HDPE with sAISI 316L stiffeners. Spindle Block POM. Mounting materials and spindle AISI 316. Sealing between plate- and backplate EPDM.



Adresse/Address  
Fagerberg Norge a.s  
Pancoveien 28  
1624 GRESSVIK

Telefon/Telephone  
+ 47 69 35 55 30

Telefax/Teletype  
+ 47 69 35 55 31

E-post/E-mail  
[post@fagerberg.no](mailto:post@fagerberg.no)

Hjemmeside/Web-site  
<http://www.fagerberg.no>

Bankonto/Bank account  
5183.05.40869

Foretaksnr./Reg. No.  
NO 856 326 942 MVA

