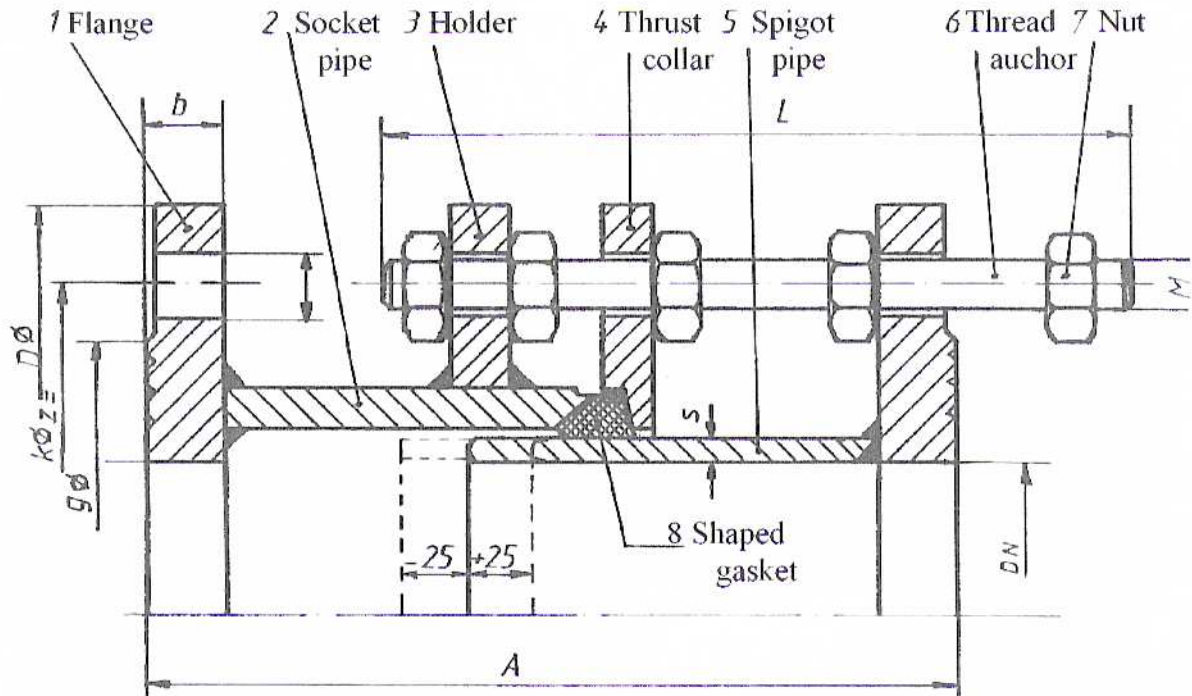


Dismantling – adjusting piece (Pon-Socket-spigot Joints) type PF -rigid-



Putting into operation resp. Assembly instructions

During pipe assembly the socket-spigot-joint type “PF” is inserted in the pipeline resp. behind the slide valve (flap) as a continuous assembly-part.

Note : the flat gasket rings, provided on the part of the builder, have to be centred, only than the flanges can be tightened up firm with the counterflange.

After the pipeline has been assembled and fixed on the overall length the thrust collar will be tightened as sealing element.

Now the socket-spigot-joint is ready for work and can be loaded with the full axial thrust.